

Good Shepherd School



...Care...Respect...Honesty...
Newsletter No 7, 14 May 2020

From the Principal

Ngā mihi ki a koe me to whānau

As we enter yet another phase of our journey through this pandemic, I am reminded once again how appropriate our school values are in shaping our decisions and actions. We have been hearing the message to 'be kind' in the public arena repeatedly over the past few weeks, and this **caring** is something that we strive to do as a community all the time at Good Shepherd. We have been asked to **respect** decisions that have been made for us, and to be **honest** in abiding by these directives.

Over the next few weeks we will need to trust everyone to continue to show these values:

- We will care for ourselves and each other and nurture a warm compassionate environment for our children and whānau to return to
- We will show respect by not judging others and by listening to each other's stories
- We will be honest in following the health and safety guidelines of Alert Level 2 diligently to keep everyone safe on return to school

There will be many other ways that our values will show through and shape our response to the next few weeks but you can be assured that the wellbeing of your children will be at the heart of

everything we do. We will welcome you all back next week with great love and enthusiasm.

Ngā mihi nui

Jane Hahn

Upcoming Dates

Monday 18 May - School back under Alert Level 2

Friday 29 May - Teacher Only Day

Sunday 31 May - Pentecost Sunday

Sunday 31 May - Applications for Marist College close

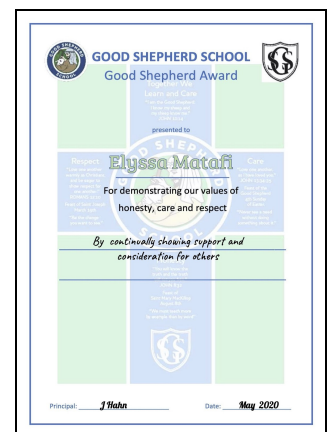
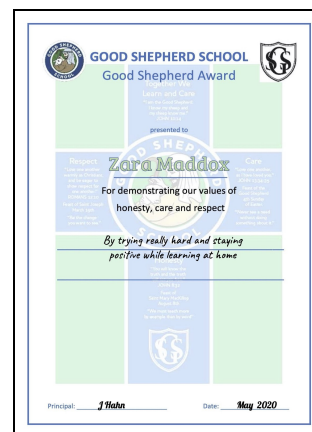
Monday 1 June - Queen's Birthday Holiday

Friday 3 July - End of Term 2

Please note that some of these dates may change

Special Character

Good Shepherd Awards



Zara Maddox - trying really hard and staying positive while learning at home
Elyssa Matafi - for continually showing support and consideration for others

Parish Masses

Attached is a [message](#) from the New Zealand Catholic Bishops' Conference about Church activities in Alert Level 2.

Please find the fourth digital edition of NZ Catholic for your interest. [Download NZ Catholic](#)

Although we are not able to gather in Church for Mass at the moment, we invite you to join with others online to celebrate daily and Sunday Mass. <https://www.aucklandcatholic.org.nz/>

Laudato Si' Week 16-24th May: A video invitation from Pope Francis

We are living through history-shaping events. Laudato Si' teaches us how to build a better world—together. For Laudato Si' Week, 16-24 May, Catholics are uniting in solidarity for a more just and sustainable future.

Stand united with our brothers and sisters in faith as we grow through the crisis of this moment to build a better tomorrow.

- Reflect and prepare through online trainings, 16-23 May
- Join the worldwide day of prayer, 24 May
- check out [Laudato Si' Week](#)

Please Keep in Your Prayers....

We ask for God's blessing on all those members of our community who are suffering illness or loss in their families at this time.

In and Around School

Welcome

We extend a very warm welcome to the following students who have started with us recently:

*Dominic Carter
Madison Laika Momoisea*

The Great Good Shepherd School Invention Challenge

Many of you have been working hard on your inventions during lockdown. You have two more weeks to put the finishing touches on your wonderful creations. Keep your inventions at home for now and we will ask everyone to bring them in together in a couple of weeks. More information

coming out very soon. Email Rosa with your photos and questions:

17y2lewthwaite@goodshepherd.school.nz

Learning Well

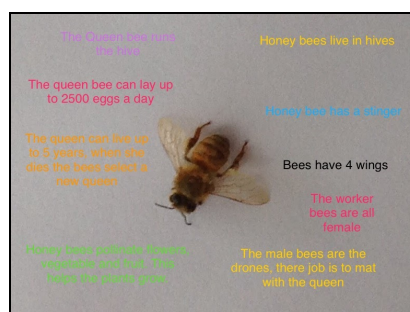
Distance Learning

What an incredible journey we've had together over the past weeks. Thank you to all who contributed to our survey which we used to adjust our programmes. One of our priorities as we return to school, is that we also take this learning with us into our classroom teaching. Thank you too, for your overwhelming support. Here are just some of the many, many, encouraging comments we received.

- *I think the school has done a great job getting this set up so quickly.*
- *I've been amazed at this technology!!!*
- *Working on the devices has been really great.*
- *The material provided was brilliant.*
- *Amazing communication and support.*
- *The effort and care into the daily worksheet was outstanding, personal and amazing.*
- *Xxx while shy, was eager to meet in the mornings with his new teacher and classmates.*
- *Xxx has learned to write her first sentence. Major improvements in her writing!*
- *Xxx liked spending time with us while learning.*
- *Xxx liked the fact her technical skills were being challenged! She loved the balance of structured work and more than adequate playtime.*
- *GSS commitment to keep the learning to the curriculum has been great. Some schools didn't appear to be doing this.*
- *Good Shepherd has been outstanding and the player of the day award for us has to be the teachers.*

A Few Examples

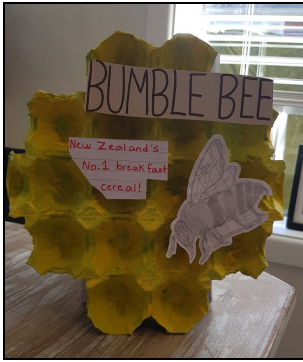
Here is a small selection of the wonderful learning that has been taking place over the last weeks.



Henry's Inquiry



Samantha's Instrument



An unusual breakfast cereal idea by Asher

[Matty J's Imaginary Character](#)
[Samantha's Giraffe Report](#)
[Jessica's Instrument](#)
[The Great Pacific Garbage](#)
[Patch Facts by Rosie](#)
[Dogs by Thomas](#)
[Xavier F's Marble Roller Movie](#)
[Reuben's Cereal Ad](#)
[Matthew's Bee Quiz](#)
[Elizabeth's Bee Quiz](#)

Follow the links to find even more learning..

Information for Whānau

Device Return

Please follow the following instructions regarding the return of your child's school device on Monday.

- All **Year 1-3** children who borrowed a device, please return the device and charger with their name sellotaped to the top, to the box in **Room 3/4**.
- All **Year 4-6** children who borrowed an **i-pad**, please return the i-pad and charger with their name sellotaped to the top, to **the office**.
- All children who borrowed a device which has been giving them problems, please return the device and charger along with a label with their name on it sellotaped to the top, to the **office** - the label needs to **specify the problem** please.
- **Year 4-6** children who borrowed a device that is usually allocated to them and has not caused any problems, please return your device to your **classroom** as usual.

Don't forget to clean the device before returning.

Winter School Uniform

To order new winter school uniforms while we are in Level 2 please email the school office admin@goodshepherd.school.nz with your order. Please include:

- a) Student name and room number
- b) Uniform item and size (we can arrange students to visit the office for fitting if required)
- c) The number of each item required

Your child will take the uniform home with them along with a slip containing the cost and how to pay. Please do not give your child money to pay at the time - we will arrange payment times separately.

[Uniform Price List](#)

Marist College Application Closing Date

Due to the Covid 19 lockdown, Marist College has extended the enrolment application closing date for 2021 until Sunday 31st May 2020, Please see attached flyer. [Link](#)

OSCA Bookings

The Good Shepherd OSCA (out of school care) programme will be available for both before and after school care next week. Please email your bookings to admin@goodshepherd.school.nz

Our Alert Level 2 health and safety guidelines require us to minimise the number of adults entering school grounds so your children will be met at the school gate in the morning and delivered to the school gate at pick up time in the afternoon. More details about these procedures will come to you in the next few days.

SCHOOL ATTENDANCE DUES COVID-19 FINANCIAL ASSISTANCE

Financial assistance is available to assist families who may need financial support as a result of the Covid-19 Virus with the payment of 2020 Attendance Dues for students attending Catholic schools in Auckland Diocese, both primary and secondary.

Families facing financial difficulties can contact their school office, their Parish Priest or the Revenue Manager on 09-360-3069 at the Catholic Diocese of Auckland for further information.

Application forms for this assistance are available from school and parish offices, or can be down-loaded from the Catholic Diocese of Auckland Website:

[Covid-19 Attendance Dues Assistance](#)

Enrolments at Good Shepherd School

Thank you to all those families who have filled out enrolment forms for siblings of current students. We also appreciate the support of our school families in recommending Good Shepherd School to their friends and whānau.

Netsafe Tips for Parents:

SET EXPECTATIONS

Talk to your child about the type of behaviours you'd like them to adopt. For example, how long they should spend online, what apps and social media sites you'd like them to use and what is appropriate content to view. This will be different depending on the age of your child, and what you feel comfortable with. Technological options like parental controls can help, but it needs to be teamed with online safety education.

To find out more about how much time children should be spending online and how to use parental controls visit the Netsafe website: [7 steps for whānau](#)

- Follow instructions above for ordering winter uniforms - we will be flexible about uniform in the first days of term
- Entry into the school office will be on a 'one out, one in' basis
- Email the school office if you would like to book your child/children into OSCA

Please refer to the [Good Shepherd School Plan for Alert Level 2](#)



R6 counting down until they can meet again for real!

Reminders for Monday 18 May

Welcome back to school! Some reminders about the big day...

- Contact Mrs Hahn if you are considering not sending your child to school on Monday
- Keep your child/children home if they are sick and inform the office straightaway that they are not coming in
- Drop children off at school gate - they will be welcomed into school by a staff member
- No adults will be allowed in the school gates other than one adult accompanying a new entrant
- Adults keep your 2m distance from each other while waiting for your children
- Return all devices to school as per instructions above (clean first please)
- Return all school materials and equipment back to school
- Send your child to school with a full, **named** water bottle