



Te Kura o Heparā Pai

*Care Manaakitanga
Respect Whakaute
Honesty Pono*

Newsletter No 3

3 Poutū-te-rangi/March 2022

From the Principal

Ngā mihi ki a koe me to whānau

We are officially in autumn and what a lovely time of year it is! In Aotearoa, New Zealand, the cooler mornings and settled sunny days coincide with the period of Lent, a 40 day season of prayer, fasting and almsgiving that prepares us for Christ's death and resurrection at Easter. We talk to our children about Lent being a season when we make an effort to live the way God wants us to by praying and acting lovingly towards other people.

The children are still enjoying the swimming season at school. We have been lucky to have Davin Bray from Swimming NZ visiting Good Shepherd over the last few weeks to share his knowledge with teachers and students about how to enjoy the water safely. We also thank Miss Evans for her work with our Year 4 students during the swimming intensive last week. We are very fortunate to have access to such expertise in this important area within our school community. Please continue to make sure your child comes to school with their swimming gear

on their swimming days to make the most of these opportunities.

Managing the Omicron outbreak continues to be a challenge for all of us. Please continue to contact us if your child or someone in your household is found to be a positive case (see COVID update below). Keep safe and look after yourselves.

Ngā manaakitanga

Jane Hahn

Upcoming Dates

03 March	Swimming NZ Sessions
27 March	Palm Sunday
03 April	Daylight Saving Ends
14 April	Last day Term 1
15 April	Good Friday

Please note that some of these dates may change

Special Character

Ash Wednesday

Wednesday 2 March, Ash Wednesday, was the first day of Lent. On this day we receive ashes in the shape of a cross on our forehead, although this year we were not able to do this as a whole school community as we would normally do. Lent is a special time when you can share the concepts of prayer and giving with your children. Take family time each day to offer devotional prayers. Consider as a family how you might help others in need by giving of your time or resources. Even very young children can understand and will enjoy participating in the process.



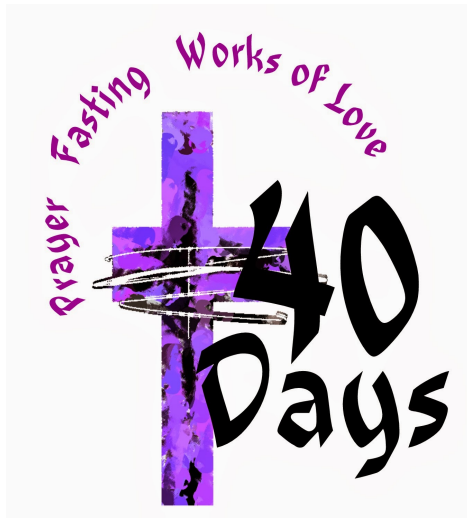
Good Shepherd Awards



Johana Diljith - You have made a great start to the year.
Elijah Fotofili - You are respectful and caring to adults and children.

From Pope Francis:

Lent is a new beginning,
a path leading to the certain goal of Easter,
Christ's victory over death.
This season urgently calls us to conversion.
Christians are asked to return to God "with all their
hearts" (Joel 2:12),
to refuse to settle for mediocrity
and to grow in friendship with the Lord.
Jesus is the faithful friend who never abandons us.
Even when we sin, he patiently awaits our return;
by that patient expectation,
he shows us his readiness to forgive



In and Around School

Room 5

This week in Room 5 we have been learning about Lent and what that means for us. We have created a Lenten promise that we hope to keep during these 40 days of Lent. On Wednesday, we went to church to watch our teacher get ashes put on her forehead.



Swimming NZ Sessions at Good Shepherd





Birthdays

Congratulations to the following children who celebrate their birthdays in March:



Sabine Andrews	Rory Barbour
Samantha Corrales	Gabriella Custodio Wilson
Carlo Eclarino	Tyler Fasala
Levi Harris	Matthew Jansen
Matthias Kautoke	Marcus Kennerley
Kyrie-Eleison Leger	Lyanna Lemalu
Gavin Lin	Lewis Mann
Darcy McGivern	Cecelia Niuula
Benicio San Martin	Felix Taito
Promise Thomsen	Melody Tuala Soon

Sport

Unfortunately the GSS Y3-6 Swimming Carnival will not be going ahead this year due to current restrictions put in place under Red setting. This is in regards to the number of people who can be in the facility at one time.

Westwave settings for Red level:

Gathering limits (100 people) doesn't apply to schools when on school grounds, **but still applies in our center.** Therefore we need to abide by the gathering and/or public facility restrictions.

So unfortunately under the RED level of the CPF- we have a maximum capacity for events of no more than **100 people.**

At this stage we don't know how long we will stay in Red level, so it's very difficult to plan ahead for sporting events. Sporting event postponements and cancellations will be updated in the newsletter regularly.

If events can't happen when planned, they will have to be canceled, as our sporting calendar is very full throughout the year.

All Eden/Albert zones events will not be going ahead under the Red level this term, including swimming, cricket and touch.

We are lucky to be able to continue with our swimming programme in our school pool this term.

Information for Whānau

Arriving at School

During the **Red** traffic light setting we are keeping children in their class bubbles during the school day. We are noticing that children are arriving at school very early and this is making physical distancing a challenge at this time of the day. We have two arrival times:

Years 1-3: 8.30am

Years 4-6: 8.45am

Please help us to keep everyone safe by keeping to these times, reminding children to stay with classmates, and ensuring they are wearing a mask, especially if they are in Years 4-6.

Advising Absences

Please advise all absences to the school office by 9.15am.

When advising of an absence by email (admin@goodhepherd.school.nz), leaving a message through the absence phone line (09 6204962) or through [schoolapps NZ](#) (download the app [here](#)), please state:

- 1) Your child's name
- 2) Room number &
- 3) Explanation for the absence.

If no explanation is provided the absence is noted in the classroom attendance register as an "unexplained absence". Where a consistent pattern of unexplained absences becomes apparent the school is required to contact the Truancy Officer.

NB: These are Ministry of Education requirements in relation to student attendance.

COVID-19 Update

It is only normal to feel anxious as we see the daily numbers of COVID cases being seen in schools, including Good Shepherd School, growing. This increase has been expected and this is why we remain at the Red traffic light setting.

It's great for a child's wellbeing and learning to be at school with their friends and school staff, and we have very good systems in place to keep everyone as safe as possible and our classrooms open. In a

worst case scenario and we have a number of staff isolating at home, we may have to shut our school, and the Board will communicate this to you.

Meanwhile, remember we are here to help and support you in any way we can. Please look at the links below for more information about isolating at home and the supports available to those who are isolating.

[Learn more: What does it mean if I'm a household contact?](#)

This graphic will be helpful in identifying whether you are a household contact and what steps you should take.

[See the Unite Against COVID-19 website for more information.](#)



Attendance Dues Support for Parents and Caregivers facing Financial Difficulties due to the current Covid-19 Lockdown

Attendance dues support is available to assist parents and caregivers facing financial difficulties.

Details on how to access this support are available on the Catholic Diocese of Auckland website. <https://www.aucklandcatholic.org.nz/catholic-schools-2/>

or please contact Carol Krebs CarolK@cda.org.nz

Good Shepherd School Uniform

Good Shepherd has made the transition to a new school uniform provider. Elizabeth Michael Uniforms have taken over the manufacture and supply of our school uniform. It can be purchased from their shop in Bond St, Newton and through their on-line web portal. www.elizabethmichael.co.nz
Use School Code: GS221

2023 Enrolment Information

[St Peter's College](#) applications Close 01 April 2022

[Baradene College](#) Open Day 3 March 2022

Bookings required. Applications close 18 March 2022

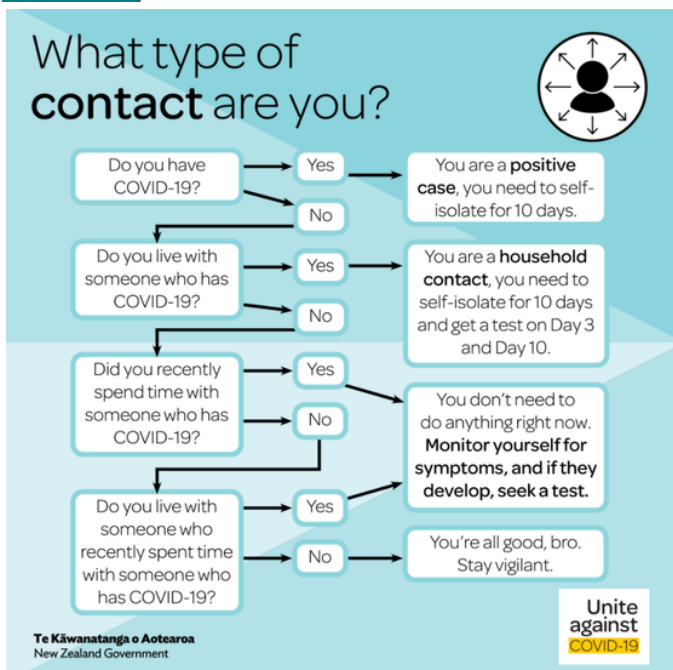
[Marist College](#)

[Marcellin College](#)

[St Mary's College](#)

[St Paul's College](#)

[Sacred Heart College](#) applications Close 13 April 2022



If you test positive for COVID-19, everyone else in your household becomes a household contact and you need to isolate together for at least 10 days.

[Find further information about testing positive in this brochure.](#)

If you know any whānau who need extra support while they are self-isolating because of COVID-19, Work and Income may be able to help.

[Visit the Work and Income website and use their online form to let them know how they can help.](#)

ST. PETER'S COLLEGE



Mountain Road, Epsom
Tel: 524 8108

Catholic School for Boys Years 7 – 13

APPLICATIONS OPEN FOR 2023

For Year 7 Enrolments in 2023

Limited enrolments at other levels

APPLICATION FORMS AND THE ENROLMENT PROCESS FOR 2023 CAN BE DOWNLOADED FROM OUR WEBSITE OR ALTERNATIVELY A PACK CAN BE COLLECTED FROM OUR MAIN OFFICE
APPLICATIONS WILL CLOSE ON Friday 1st APRIL 2022 AT 4.00PM
NO LATE APPLICATIONS WILL BE ACCEPTED

St Peter's College provides an education in the **CATHOLIC** tradition by building a strong foundation in the **ACADEMIC, SPORT & MUSIC** areas.

The College has a dual pathway of assessment with both Cambridge International Examinations and NCEA offered at senior year levels.

The College is well served by public transport from all parts of Auckland

"ST PETER'S BUILDS OUTSTANDING MEN"

DUE TO CURRENT RESTRICTIONS OUR OPEN DAY WILL NOT BE ABLE TO PROCEED ONSITE. WE WILL BE PRESENTING AN ONLINE PRESENTATION. PLEASE CHECK OUR WEBSITE FOR THIS DATE TO BE CONFIRMED.



Sacred Heart College
AUCKLAND



Enrolment Applications Now Open

Applications for Year 7 and Year 9, 2023 are now open and we welcome your interest.

A Sacred Heart education provides a foundation of faith and an aspiration to succeed at the highest level in personal and professional life. Places are available in Years 7 and 9 in 2023, boarding available from Year. Applications close **13 April 2022**.

Applications are prioritised in accordance with our Enrolment Scheme. Scholarships are available.

For further information and to apply visit our website www.sacredheart.school.nz

Enrolments | Ph (09) 529 3660 extn 714

Email: enrolments@sacredheart.school.nz

250 West Tamaki Rd, Glendowie, Auckland

LEARN HIGHLAND DANCING HERE

BALMORAL DANCERS



HIGHLAND DANCING LESSONS FOR BOYS AND GIRLS INCLUDING EXAMINATIONS, COMPETITIONS, PERFORMANCES, AND FUN

CONTACT BALMORALHIGHLANDDANCERS@GMAIL.COM FOR FEES AND DETAILS

LEARN MORE ABOUT NZ HIGHLAND DANCING AT NZAHND.ORG.NZ

SUBURBS RUGBY CLUB

#SPIDERLIFE - YOUR COMMUNITY RUGBY CLUB

JUNIOR RUGBY MIXED & GIRLS ONLY TEAMS



REGISTER ONLINE TODAY!

UNDER 5'S - UNDER 13 TEAMS

RIPPA & TACKLE TEAMS

MIXED & GIRLS ONLY TEAMS

SUBURBSRUGBY.CO.NZ



@SUBURBSJUNIORS

COME AND PLAY FOOTBALL WITH AUCKLAND UNITED!

**\$170 \$120 SUBSIDISED FEES FOR ALL
IN-HOUSE PLAYERS UNDER 12YRS!!**

SOCCER FOR BOYS AND GIRLS FROM
4YRS AND UP AT KEITH HAY PARK

FUN ENVIRONMENT FOR ALL AGES
AND ABILITIES

FOOTBALL CAN BE PLAYED AT
ALL SETTINGS INCLUDING AT RED



SATURDAY 7 MAY KICK-OFF AFTER
THE SCHOOL HOLIDAYS

REGISTER NOW AT

[AUCKLANDUNITEDFC.ORG.NZ](https://aucklandunitedfc.org.nz)

**Vaccine passports required for all players aged
over 12 years + 3 months*



आओ फुटबॉल खेलें।

[AUCKLANDUNITEDFC.ORG.NZ](https://aucklandunitedfc.org.nz)

पर रजिस्टर करें

和我們來踢足球吧，
現在登陸網站註冊

[AUCKLANDUNITEDFC.ORG.NZ](https://aucklandunitedfc.org.nz)

**NAU MAI TATO, E HAERE ANA
TATO KI TE TAAKARO - POIKIRI KI**

[AUCKLANDUNITEDFC.ORG.NZ](https://aucklandunitedfc.org.nz)