



Te Kura o Heparā Pai

*Care Manaakitanga
Respect Whakautē
Honesty Pono*

Newsletter 13
11 Hereturikōkā/August 2022

From the Principal

Ngā mihi ki a koe me to whānau,

It is with great sadness that I write this message to our community on hearing about the loss of Celia Gatt, one of our precious tamariki, last week. It is particularly hard to be so far away from our Good Shepherd family during this difficult time, although I know that Celia's whānau are surrounded by the loving support of the Baradene and Good Shepherd school communities.

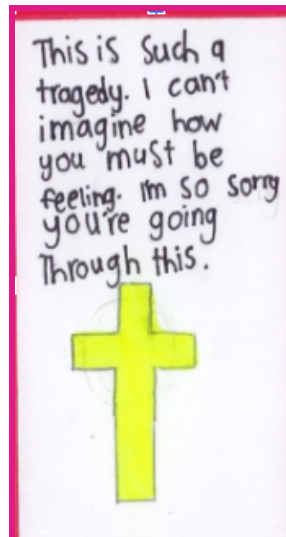
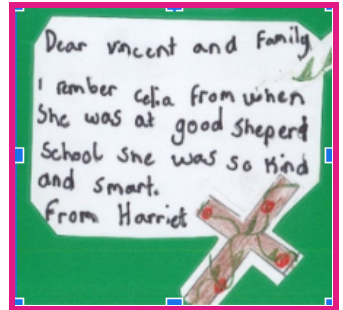
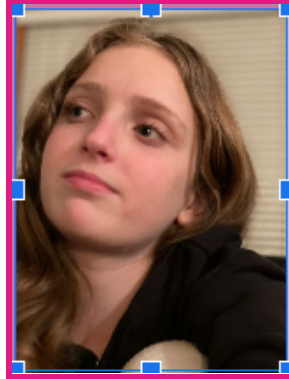
I share in the hurt and grief that you are all feeling at this sorrowful time. We treasure our memories of this precious child, with her creativity and her curiosity about the world. We entrust her to our Lord and ask him to welcome her to the fullness of peace and joy of paradise. We ask God to bring comfort and peace to Celia's family and friends.

Ma te Atua koutou e manaaki.

Jane Hahn



Special Character
Celia Rose Gatt



Dear Gatt Family,
I remember when she was at
School and she had such a
loving, kind and help-ful spirit.

Viola ♡



Lyanna Celia you are an
amazing person
I treasure
you



Dear Vincent and family
I remember when it was the
GSS talent show 2020 when Celia
was in the Fairy group it was
really funny she was a great
performer from Lachie



Dear Celia in heaven
I hope you have a
great time in heaven



Celia I remember you
Playing on the beanbags at
Lili world just this year.
I remember
from Henry.
Keep going Gatts.



Dear Gatt family,
I am very sorry for your loss.
I know how hard it was to lose one
of your very own members.
Celia was and always is in our hearts.
She was very kind and funny.
May she rest in God's arms in
heaven, Amen

Sharelle



a wonderful
child.
Love Carlo



Celia was
always positive &
kind. God bless Gatt
Family!
Love Phoebe.C



Celia was my
sister's best friend
FRANCESCO ♡

Dear Vincent ★ it must
be hard losing Celia
I bet if you see
a butterfly it will
be here



Celia Support

We are very grateful to our Good Shepherd School
whānau for rallying around the Gatt family during

this time, in particular our Catholic Caring Community.

In addition, an account has been set up, where people can contribute to assist the Gatts over the coming weeks and months.

Here are the account details:

12-3077-0845558-50

If possible, the Gatt family has asked those who contribute to please leave their name, so they can be personally thanked.

In lieu of flowers, the whānau have requested donations to St John's Ambulance or Starship Children's Hospital.

Arrangements for Tomorrow

Lunchtime tomorrow will begin at 12.30pm. If you are collecting your child at 12.30pm, please come to the classroom to collect them and ensure that the teacher is aware. If you come into school after that, you will need to sign your child out. There will be no Moosies or Sushi on sale tomorrow.

Good Shepherd Awards



Felix Taito: *You are always well mannered and display our school values in all you do .*

Hao Nguyen: *You have been managing yourself and taking on responsibility.*

Prayer kete

We are happy to reintroduce our Good Shepherd School prayer kete. In it you will find a variety of resources to explore and discuss with your child and some suggestions of ways to pray. You can use any of the resources from the kete or you can bring in things that you use to pray at home.

In and Around School

Upcoming Dates

Please note that our scheduled Pacific Fono will **not** be going ahead this Sunday. Please keep an eye on the 'Pasifika Whānau' WhatsApp and your email for the rescheduled date.

8-12 August	Maths Week
12 August	Colourful Clothes Day- Student Council Fundraiser
12 August	Collect your child at 12.30pm if possible
18 August	Cultural Celebration Day
19 August	Teacher Only Day - school closed
23 August	Whole School Zoo Trip
31 August	GSS Speech Finals
1 Sept.	Eden/Albert Netball Zones
5-9 Sept.	Tongan Language Week
5-9 Sept.	Social Justice Week
6 Sept.	Eden/Albert Netball Zones Save Day
7 September	BOT election day
12-16 Sept.	Life Education Caravan
13-19 Sept.	Māori Language Week
22 September	Grandparents Day
26-30 Sept.	NZ Chinese Language Week
30 September	Term 3 ends
17 October	Term 4 begins
24 October	Labour day holiday
15 December	Term 4 ends

Please note that some of these dates may change

Chess Tournament

On Wednesday we had 14 students participate in the Auckland Central Interschools Chess Championship. We had 3 teams overall who all did amazingly. They have been working very hard to get to this point and we are very proud of them. They showed great spirit, sportsmanship and the Good Shepherd Way all day!



Room 8

We humans use all sorts of ways to keep warm in the freezing cold weather. But have you ever wondered how our lovely birds survive winter? Let's see what Hugo says after his research.

How Birds Survive Winter

By Hugo Madarasz

Have you ever wondered how our beautiful birds survive the cold frosty winter? Here are some of the ways that help birds survive.

Some birds in the southern hemisphere fly north to avoid winter and come back to their home when it is summer, which is called migration. Migration is when a group of the same type of birds fly to another part of the world. Migration also usually depends on the season. Most birds migrate in winter. There are lots of birds that migrate. Hummingbirds, for example, a lot of the North American ones fly to Mexico or central America for winter. Swallows travel down through Western France and Eastern Spain into Morocco, before crossing the Sahara Desert and the Congo rainforest, finally reaching South Africa and Namibia. Small songbirds migrating north in the spring fly directly over the gulf of Mexico, landing on the coastlines of the gulf coast states. It seems normal that lots of birds flee to different parts of the world to avoid the cold winter and stay with the warm summer.

Some birds rest and sleep in winter to stay warm, which is called roosting. Roosting is when birds rest, sleep and maybe even cuddle up with each other. Birds usually roost in winter to avoid the cold. A good example is chickadees. These birds usually roost on their own inside tree hollows, bird boxes and cracks in buildings.

Torpor, another way for birds to survive winter, is when birds lower their heart and respiratory rate down to a point that they save energy. Birds that rely on insects for food are more likely to use torpor when insects disappear and can't find any food. Examples of birds that use torpor include doves, chickadees and sunbirds.

Most birds adapt their bodies to survive winter. Lots of small birds need to gain lots of fat to survive the coming night. A few birds do this, for example, a redpoll coat in winter is 50 percent thicker than their summer coat. Waterfowl have tucking feet and bills to help keep their body temperature higher.



Although winter is very cold, our smart birds can always find ways to survive, which is really amazing.

Sports

Lunchtime Football Programme

If you have signed your child up for the lunchtime football programme, this will begin on Tuesday 16 August. Children will need a change of clothes and shoes.

Cultural

GSS Cultural Celebration Day

On Thursday 18 August, we will be celebrating the diverse and varied cultures and ethnicities we have here at GSS. Children are encouraged to come to school wearing something that represents their culture and identity.



Information for Whānau

Teacher Only Day - Friday 19 August

The school will be closed on Friday 19 August, as the teachers will be participating in professional development.

Colourful Clothes Day

Tomorrow **Friday 12 August** we will be having a colourful clothes day (used to be called mufti day). It is a fundraiser for the student council. Please wear your own clothes to school and bring in a gold coin donation.

Telford Ave Entrance Closed- Tuesday 16 August

Please use Volcanic Street car park entrance to collect your children at school pick up, as Telford Ave will be closed due to a funeral from 2pm.

School Board Elections



Election voting closes at 4pm on Wednesday 7 September 2022.

Community Consultation

This year the Good Shepherd School Board of Trustees is continuing their comprehensive survey of the school community. The board will use the information from this consultation to inform the development of the school Charter and Strategic Plan 2023 to 2025.

We are hoping that all members of our school community, parents and whānau, students and staff, will play a part in this process of planning together for the future.

Please follow this [Community Consultation](#) link to complete the survey and you will need to set aside around 15 minutes.

NB if you have already completed the survey previously you do not need to complete it again.



Enrolments at Good Shepherd School

If you, or anyone you know, are considering enrolling your child at Good Shepherd, please contact the school office as soon as possible on admin@goodshepherd.school.nz.

As always we appreciate your recommendations of our school to friends and whānau and we also plan to have an open day in the near future to show off our lovely school. Watch this space..

SCHOOL ATTENDANCE DUES FINANCIAL ASSISTANCE

Financial assistance is available to assist families who may need financial support with the payment of Attendance Dues for preference students attending both primary and secondary Catholic schools in Auckland Diocese.

Families facing financial difficulties can contact their school office, their Parish Priest, or Auckland Common Fund Ltd at the Catholic Diocese of Auckland on 09-360-3069 for further information.

Application forms for this assistance are available from school and parish offices, or can be downloaded from the Catholic Diocese of Auckland Website:

<https://www.aucklandcatholic.org.nz/catholic-schools-2/>

Good Shepherd School Uniform

Please ensure that your child is wearing their correct school uniform:

Winter Uniform: Students wear winter uniform in Terms 2 & 3. This includes black knee high socks and black shoes.

Sports Uniform: Compulsory for Years 4, 5 and 6.

Jewellery, nail polish, makeup, hair

A watch and ear studs are the only jewellery permitted with the school uniform. Nail polish is not permitted on either fingers or toes. Makeup may not be worn. Long hair must be tied back. Hair accessories must be either navy blue or black.

Finally, we have a good selection of second hand uniforms available at minimal cost from our school office.

GOOD SHEPHERD SCHOOL UNIFORMS

With Auckland schools reopening you can now come into the Elizabeth Michael Bond Street shop to organise your child's Good Shepherd uniform!

Shop safely with covid protocols in place.

You can also shop online 24/7. Simply visit www.elizabethmichael.co.nz and register for Good Shepherd School by entering the school code **GS221**. We can courier to you or you can select pick up from our Bond St store.

Mon - Thurs 9.00am - 5.00pm
Fri 9.00am - 4.00pm
Sat 9.00am - 12 noon *

BACK TO SCHOOL - SATURDAY OPENING HOURS

*Extended Saturday hours from 4 Dec 2021 to 12 Feb 2022 are as follows:
 Saturday 4, 11, 18 Dec 2021 9.00am-3.00pm
 Saturday 8, 15, 22, 29 Jan 2022 9.00am-3.00pm
 Saturday 5, 12 Feb 2021 9.00am-3.00pm

ElizabethMichael

UNIFORMS

4 Bond Street, Grey Lynn, Auckland 1021
 P: 09 358 1680 • uniforms@elizabethmichael.co.nz • www.elizabethmichael.co.nz

No sushi Friday 12 August

If you have placed an order in advance you will have been refunded. Sushi orders will resume next week

Thursday 18 august due to our Teacher Only Day
on Friday 19 August

Road Safety Around School

A reminder to all parents that drop their children off in cars, please limit your speed AT ALL times. We have been getting alarming reports about fast cars entering and exiting Telford Ave and Volcanic Street car park, specifically between the times of 7:30am-9am and 3pm-6pm.

